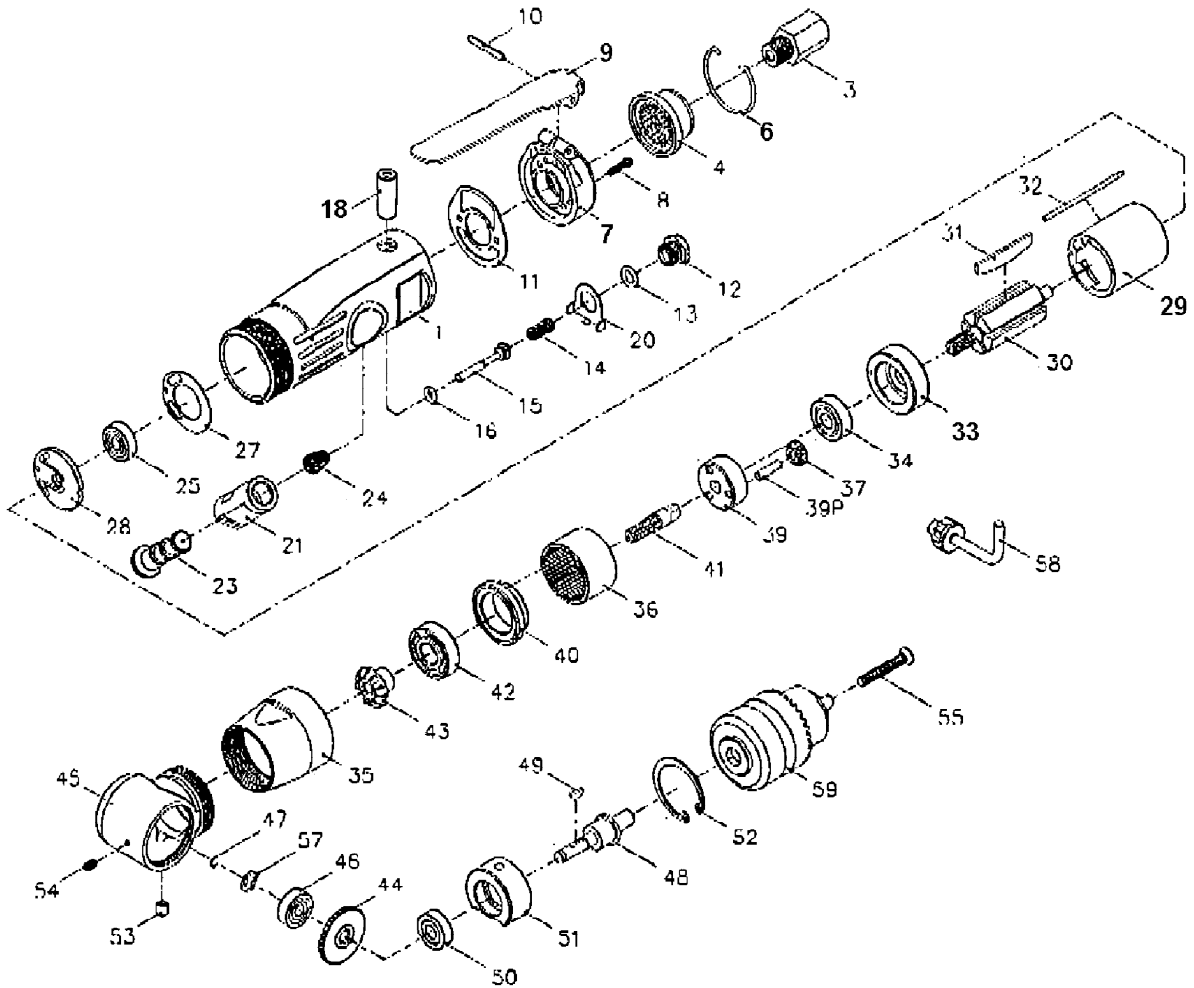


Model No. A14-L7608

3/8" REVERSIBLE AIR ANGLE DRILL



Part No.	Description	Q'ty	Part No.	Description	Q'ty	Part No.	Description	Q'ty
1	Motor Housing	1	24	Reverse Spring	1	43	Pinion	1
3	Inlet Bushing	1	25	Ball Bearing (626ZZ)	1	44	Gear	1
4	Deflector	1	27	Gasket	1	45	Angle Housing	1
6	Stop Ring	1	28	Rear End Plate	1	46	Ball Bearing (626ZZ)	1
7	Housing Cap	1	29	Cylinder	1	47	Retainer Ring (S-5.6)	1
8	Screw	2	30	Rotor	1	48	Spindle	1
9	Lever	1	31	Rotor Blade	5	49	Key	1
10	Spring Pin (ø3x24L)	1	32	Motor Pin	1	50	Ball Bearing (607ZZ)	1
11	Gasket	1	33	Front End Plate	1	51	Rearing Case	1
12	Valve Screw	1	34	Ball Bearing (608ZZ)	1	52	Retainer Ring (R-34.4)	1
13	O-Ring (d7.0xW2.0)	1	35	Lock Ring	1	53	Ball Cap	1
14	Valve Spring	1	36	Internal Gear	1	54	Set Screw	1
15	Throttle Valve	1	37	Planet Gear	3	55	Screw (M5x20)	1
16	O-Ring (d4.0xW2.0)	1	39	Cage	1	57	Wave Washer	1
18	Valve Bushing	1	39P	Pin	3	58	Chuck key	1
20	Reverse Retainer	1	40	Spacer	1	59	3/8" Drill Chuck	1
21	Reverse Bushing	1	41	Gear Spindle	1			
23	Reverse Valve	1	42	Ball Bearing (6001)	1			